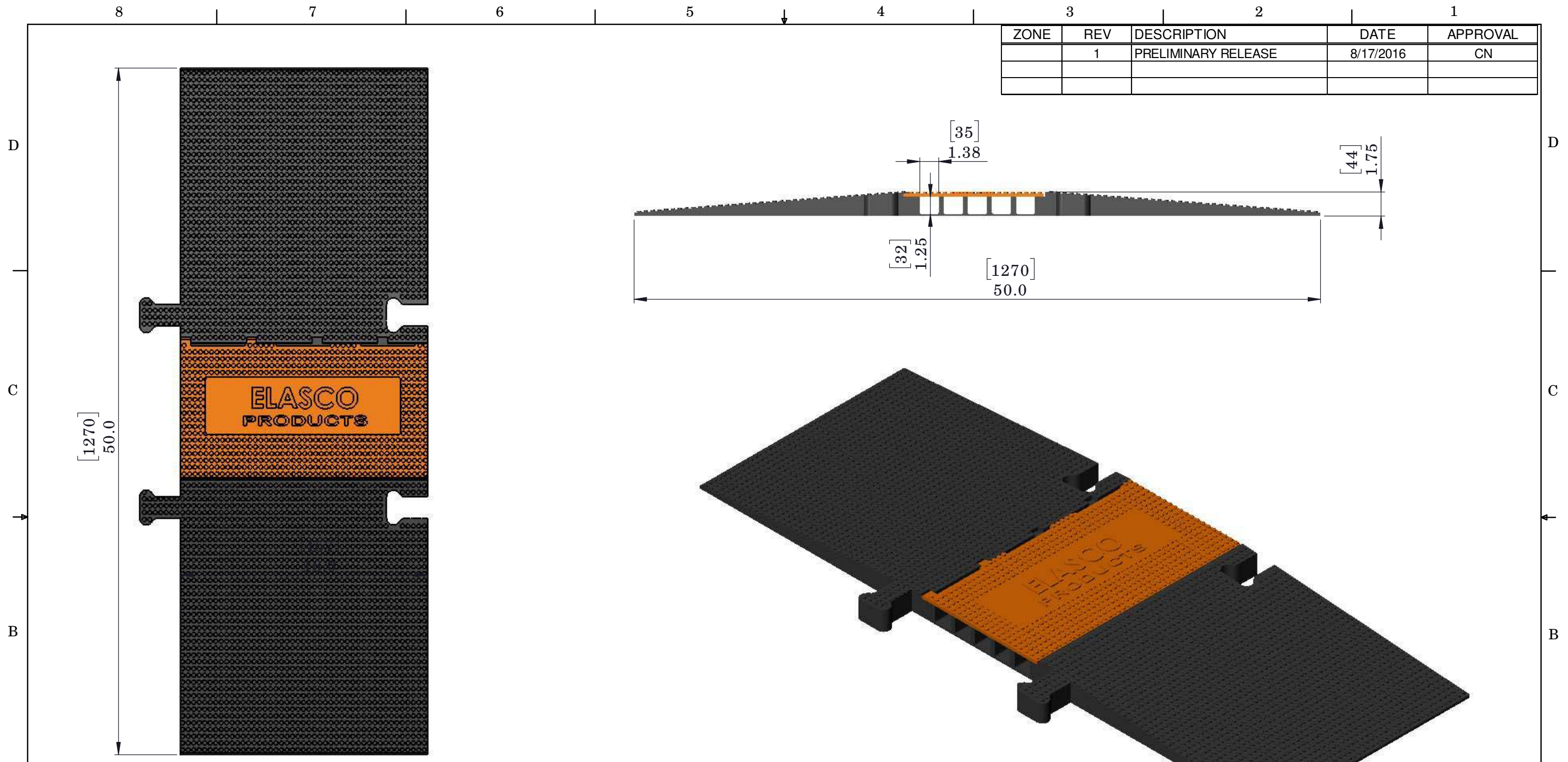


ZONE	REV	DESCRIPTION	DATE	APPROVAL
	1	PRELIMINARY RELEASE	8/17/2016	CN



Technical Data Sheet

DESCRIPTION	IMPERIAL	METRIC
Product Length x Width x Height	50" x 18" x 1.75"	1270mm x 457mm x 44mm
Channel Size	1.38" x 1.25"H"	35mm x 32 mm
Product Weight	XXX.0 lbs	XXX.9 kg
Load Capacity (per/axle)	20,000 lbs / tire	9071 kg
Operating Temperature	-20°F up to +140°F	-30°C up to +60°C

Standard Colors - Black/Orange (Contact for Custom Color options)
 Duromater – 90 Shore A Base / 55 Shore D Lid +/-5
 Material – Polyurethane
 Manufactured in USA

PROPRIETARY AND CONFIDENTIAL THE INFORMATION CONTAINED IN THIS DRAWING IS THE SOLE PROPERTY OF THE ESAC. ANY REPRODUCTION IN PART OR AS A WHOLE WITHOUT THE WRITTEN PERMISSION OF THE ELASCO IS PROHIBITED.	UNLESS OTHERWISE SPECIFIED: DIMENSIONS ARE IN INCHES TOLERANCES: FRACTIONAL: ± 1/32 ANGULAR: MACH ± 1° BEND ± 1° .X = ± .1 .XX = ± .01 .XXX = ± .005	Elasco Products, LLC 18065 Redondo Circle Huntington Beach, CA 92648	
	UNLESS OTHERWISE SPECIFIED DIMENSIONS AND TOLERANCES PER ASME Y14.5M	DRAWN: CN 8/16/2016 CHECKED: APPROVED: ELECTRONIC SIGNATURE ON FILE	TITLE: Five Channel UG Series
SCALE: 1:7		SHEET 1 OF 2	

ZONE	REV	DESCRIPTION	DATE	APPROVAL
	-	See Sheet One		

			MIGHTYGUARD COLLECTION UG5140-ADA		
Technical Data Sheet					
DESCRIPTION		IMPERIAL		METRIC	
Product Length x Width x Height		50" x 18" x 1.75"		1270mm x 457mm x 44mm	
Channel Size		1.38" x 1.25"H"		35mm x 32 mm	
Product Weight		XXX.0 lbs		XXX.9 kg	
Load Capacity (per/axle)		20,000 lbs / tire		9071 kg	
Operating Temperature		-20°F up to +140°F		-30°C up to +60°C	
Standard Colors - Black/Orange (Contact for Custom Color options) Durometer – 90 Shore A Base / 55 Shore D Lid +/-5 Material – Polyurethane Manufactured in USA					
Tips:					
Designed and rated for use on firm and level ground.					
Cable Protectors should be connected female side over male side.					
Lid should be pushed shut and flush with base of product.					
For one-way traffic, hinge should be on traffic side.					

Elasco Products, LLC 18065 Redondo Circle Huntington Beach, CA 92648		
SIZE	DWG. NO.	REV
B	UG 5140	1
SCALE 1:6		SHEET 2 OF 2